



# SANFL Infrastructure Plan

## 2022-2032

# Contents

Message from the CEO	03
----------------------	----

## **INTRODUCTION AND CONTEXT** 04

Introduction	05
National, State and local influences on football	06
The Value of Community Football	07

## **FACILITY DEVELOPMENT** 08

National Facility Planning	09
Facility Funding Framework	10
How are facilities changing?	11

## **FACILITY ANALYSIS** 12

Football Facilities Snapshot	13
Facility Hierarchy	14
The State of Facilities	15
Inventory of Football Venues	16
Facility Provision Ratios	17

## **STATEWIDE STRATEGIC FRAMEWORK** 18

Statewide Strategic Framework	19
Stakeholder Responsibilities for Implementation	20
Measuring Success	21

## **APPENDIX 1: REGIONAL SUMMARIES** 22

SANFL Planning Regions	23
Adelaide Hills	24
Barossa	26
Eastern Adelaide	28
Eyre and Western	30
Far North	32
Fleurieu	34
Limestone Coast	36
Murray and Mallee	38
Northern Adelaide	40
Southern Adelaide	42
Western Adelaide	44
Yorke and Mid North	46

## **APPENDIX 2: THE STATE OF PLAY** 48

SANFL Participation Snapshot 2019	49
Participation	50
Female Participation	51
Club Participation by Age Cohort 2014-2019	52
Participation by SANFL Planning Regions	53
Participation by Clubs	54
Potential Participation Growth	55
Population Projections	56

## **APPENDIX 3: STAKEHOLDER ENGAGEMENT SUMMARY** 58

Stakeholder Engagement	59
------------------------	----

## Message from the CEO

SANFL is extremely proud of the role it has played in ensuring football in South Australia has continued throughout the COVID pandemic, offering our communities a sense of stability, and belonging, throughout such an uncertain two-year period.

Australian Football in South Australia has provided people from all walks of life - both in regional and metropolitan areas - with a vehicle to seek connection, friendship, physical activity and entertainment.

To ensure the 254,000 participants across all facets of our sport in 2021 are afforded the opportunity to play our great game, SANFL remains dedicated to our vision of connecting communities through the enjoyment of playing Australian Football.

The provision of high-quality facilities, at all levels, is a key strategic imperative to achieving this vision.

Since June 2021, the State Government Sports Infrastructure Program alone has contributed more than \$19.1M to facility projects across 43 South Australian football clubs resulting in a total project value of \$50.5M. This has made a significant impact on the experience of our participants, particularly females and junior players. But there remains more to do.

The unprecedented growth in the number of female teams across community and SANFL clubs, drives us to ensure new facilities are designed to cater for increased participation, meet diverse needs whilst enabling safe environments and meeting contemporary community expectations.

The SANFL Infrastructure Plan 2022-2032 identifies priorities for the improvement and development of football facilities including player, umpire and spectator amenities, lighting and oval surfaces across South Australia.

By focusing on specific requirements, we will ensure all football participants - players, umpires, volunteers and spectators - feel safe whilst enjoying a rewarding experience.

SANFL recognises we cannot achieve this goal alone. We value our partnerships with government agencies, funding bodies and other sporting codes and are committed to working collaboratively to deliver projects which meet community needs while achieving shared objectives.

Australian Football in South Australia is in a strong position despite the challenges of the past two years, providing SANFL with an exciting opportunity to continue its outstanding reputation by delivering its Infrastructure Plan across the next decade.

**Darren Chandler**  
CEO





# Introduction and Context



# Introduction

While Australian football has established its place in the sporting landscape across South Australia, it continues to expand its reach into both new and existing communities offering an assortment of programs. As participation increases through these programs, so too must the availability and access to football facilities. Existing facilities face increasing pressure to cater for current and projected demand, with high participant-to-oval ratios indicating that existing infrastructure will experience capacity challenges in many locations.

The SANFL Infrastructure Plan 2022-2032 (“The Plan”) provides the approach for addressing these challenges and guiding the future provision of Australian football infrastructure across the state. Using a sound evidence base of on and off-field facility audits, existing participant and likely market demand data, this Plan strives to identify the current infrastructure gaps and future requirements needed to better support Australian football across SA. The Plan provides a 10-year road map that addresses the planning, provision and enhancement of football facilities, and identifies the areas of greatest need for investment.

SANFL is the peak body for Australian football in South Australia with over 300 Clubs participating in 26 leagues, 2115 teams, more than 67,000 club participants and over 38,000 volunteers.

Established in 1877 as the South Australian Football Association, SANFL is the oldest State League competition in Australia, one week older than the Victorian Football Association. Renamed the South Australian Football League in 1907, the N was added in 1927 to reflect the national game of Australian football.



In South Australia, football utilises 299 grounds every year to facilitate State, Regional and Community Competitions whilst school and community venues are used to support football programs and initiatives such as AFL9s, Walking Football and Auskick.

The importance of football facilities is demonstrated in the SANFL's Strategic Plan 2022 – 2024 where “Quality facilities at all levels” is identified as a key strategic priority. This is imperative to achieving the SANFL vision of *Connecting communities through the enjoyment of footy.*

## 06 National, State and local influences on football

The way we plan, deliver and develop our game is influenced by numerous factors across the National, State and Local landscape. These factors consider social, economic and strategic influences and form the basis for our decision making

### SUPPORTING WOMEN AND GIRLS

- The growth of the game has been significant in recent years, largely underpinned by the overwhelming success and expansion of AFLW.
- There has been a ten-fold growth in female community football teams in the past decade. 1 in every 5 Auskickers are girls.
- In South Australia, for every 1 female football team in 2010, there are now 13.8 teams.
- Across Australia, almost half (47%) of our community football venues now host female football competition, whilst only 33% have adequate infrastructure to cater for these participants.

### RECOVERING FROM COVID-19

- Australia's economic and social environment has changed rapidly in the past two years and the road to recovery will be challenging for individuals, businesses and communities.
- Community participation in our game has bounced back strongly to levels beyond that of pre-COVID times with 4% participation growth since the 2019 season.
- Income and funding opportunities have been impacted by COVID-19 making it challenging to invest.



- Due to the fluctuation in 2020 participation, participant figures within this report are based on the 2014 to 2019 seasons only. This provides a more equal analysis of seasons past, as 2020 participation will be inconsistent across areas of the State.

### GROWING THE AUSTRALIAN ECONOMY

- The AFL industry contributes \$7.6B to the Australian economy, through its 1.7M participants, 3,200 clubs, 1M AFL/W club members and 17M attendees to live football matches annually (elite and community levels).

# The value of community football

The benefits of investing in sport, including Australian football, extend beyond participation. It also provides positive economic and social outcomes for the broader community including inclusiveness, social connectedness, jobs and wellbeing.

Recent studies have been commissioned to understand the economic and social benefits of Australian football. In 2015, AFL Victoria and Latrobe University undertook research to determine the social value of a typical community football club. The study found that for every \$1 spent on a community football club, there was at least \$4.40 return in social value.



Similarly, the West Australian Football Commission undertook a report to measure and track social return on AFL investment (SROI). It found that for every \$1 spent by club-based WA Football, \$2 of economic activity was created, generating \$225M in social benefits to the community each year (across the total network of clubs).

In both studies, the strongest benefits were found to be delivered in the areas of mental health, physical health, personal well-being and education. Other benefits included social inclusion, civic pride, empowerment, social connectedness, regional population stability and cultural integration.

## SANFL CLUB'S SOCIO-ECONOMIC CONTRIBUTION

In 2021, SANFL released a report detailing the significant economic contributions of South Australia's State League Clubs, which is estimated at \$80 million per annum. It found that each SANFL Club contributes the below social and economic benefits to their communities each year.



**\$9.858M annual economic contribution**  
(**\$4.773M in direct club expenditure**)



**39.2 full-time equivalent jobs** (involving 122 people)



**\$912,800 lifetime physical and mental health benefits**  
(**\$36,500 per annum**)



**28,741 spectator attendances**



**9,300 volunteer hours**



**502 player participants**



**144 program and event related participants**



**50 community group, club and school collaborations**



**9 local businesses engaged**



The image shows the exterior of a modern building with grey corrugated metal siding. A large window with a black frame is visible on the left. A yellow door is partially open, revealing a bright interior. A blue geometric overlay is present in the bottom right corner, and a blue banner with the text "Facility development" is at the bottom.

Facility development



# National facility planning

Over the past five years, there has been significant advancements in the tools and resources delivered by the AFL to support football stakeholders in the planning and development of facilities.

## NATIONAL INFRASTRUCTURE PLAN

The Australian Football Infrastructure Plan provides national direction on the future planning and development of Australian football facilities. It provides guidance on the consistent delivery of our three overarching facility goals and the estimated \$2.1B of collective investment to bring the Plan to its full realisation to sustainably manage growth.

Three overarching facility goals have been developed to guide our resourcing in terms of infrastructure:

1. Build the capacity of community football.
2. Enhance elite, state league and talent infrastructure.
3. Drive innovation and growth.

Under these goals we focus on addressing nine key national facility priorities. These priorities are aligned with the segments of our game that are experiencing strong growth and the locations where our facilities are insufficient to meet the needs of the game, clubs and communities.

## AFL PREFERRED FACILITY GUIDELINES (2019)

The Guidelines outline the preferred facility requirements for State League, Regional, Remote and Local level facilities. The Guidelines were initially developed in 2012 to provide direction for the development of new facilities and/or those being considered for major refurbishment or redevelopment.



This 2019 edition aims to recognise changing trends in the facility space. These include:

- The growth in female participation and the subsequent need to address amenity provision and provide welcoming, inclusive club environments.
- Innovation in facility and ground surface design.
- The need to access an increasing number of venues to address ground capacity issues.

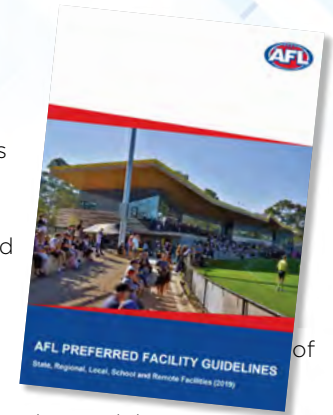
Other updates since 2012 include a new facility hierarchy model that recognises remote and school facility classifications, lighting standards and introduction of LED design, inclusive facility design, synthetic and hybrid turf and enhanced oval dimensions and run off areas.

## AFL NATIONAL SPORTS FACILITY AUDITOR TOOL

The location, provision and condition of all football facilities across SA have been audited by SANFL staff. Audits were carried out using the AFL National Sports Facility Auditor tool.

As a sport, the AFL has an ongoing commitment to the AFL National Sports Facility Auditor database and audit program to collect, update and monitor facility provision, and their quality and compliance with guidelines. This resource is available to SANFL to assist in providing empirical evidence to effectively plan and support the delivery of facility improvement and development projects.

The audit program analyses compliance with Australian Standards and AFL Preferred Facilities Guidelines. Audit data can be used to identify gaps in provision (what amenities a facility has) and standards (condition, size and general provision).



## 10 How are facilities changing?



### INCLUSIVE CHANGE FACILITIES

Change facility design has improved to provide spaces that support all participants and officials. The *AFL Preferred Facility Guidelines* provide guidance on inclusive design for community facilities, including the provision of private spaces to shower and change, replacing urinals with toilet cubicles and improvements to safety and security.



### COMMUNITY CONTEMPORARY EXPECTATIONS

The increasing professionalism of football, the SANFL and the AFL impacts at all levels of the game. Increasing needs and requirements to provide more opportunities and improved experiences with less resources is fast becoming the norm across all levels of sport. With Adelaide's community football venues at capacity in most areas, attention is turned to the major assets of state level venues to open their doors and do more for their local communities



### ENVIRONMENTAL SUSTAINABILITY

Improvements in facility design are allowing more efficient use of resources and decreasing environmental impacts. Water re-use systems, LED sports lighting and solar panels are now becoming standard components within community football facilities.



### SYNTHETIC AND HYBRID SURFACES

Synthetic and hybrid playing surfaces have become a viable option for increasing facility capacity, particularly in areas of high facility use with limited additional green space availability (i.e. metropolitan centres). These surfaces can cater for up to three times the use of natural turf. There is currently no synthetic AFL size oval in SA for Australian football use.



### MODULAR BUILDINGS

Growing participation is putting pressure on existing facilities and increasing the need to find new venues. The emergence of modular building construction provides an opportunity to deliver new change and pavilion facilities in a timely and cost-effective manner, whilst still meeting AFL design standards.



# Facility funding framework

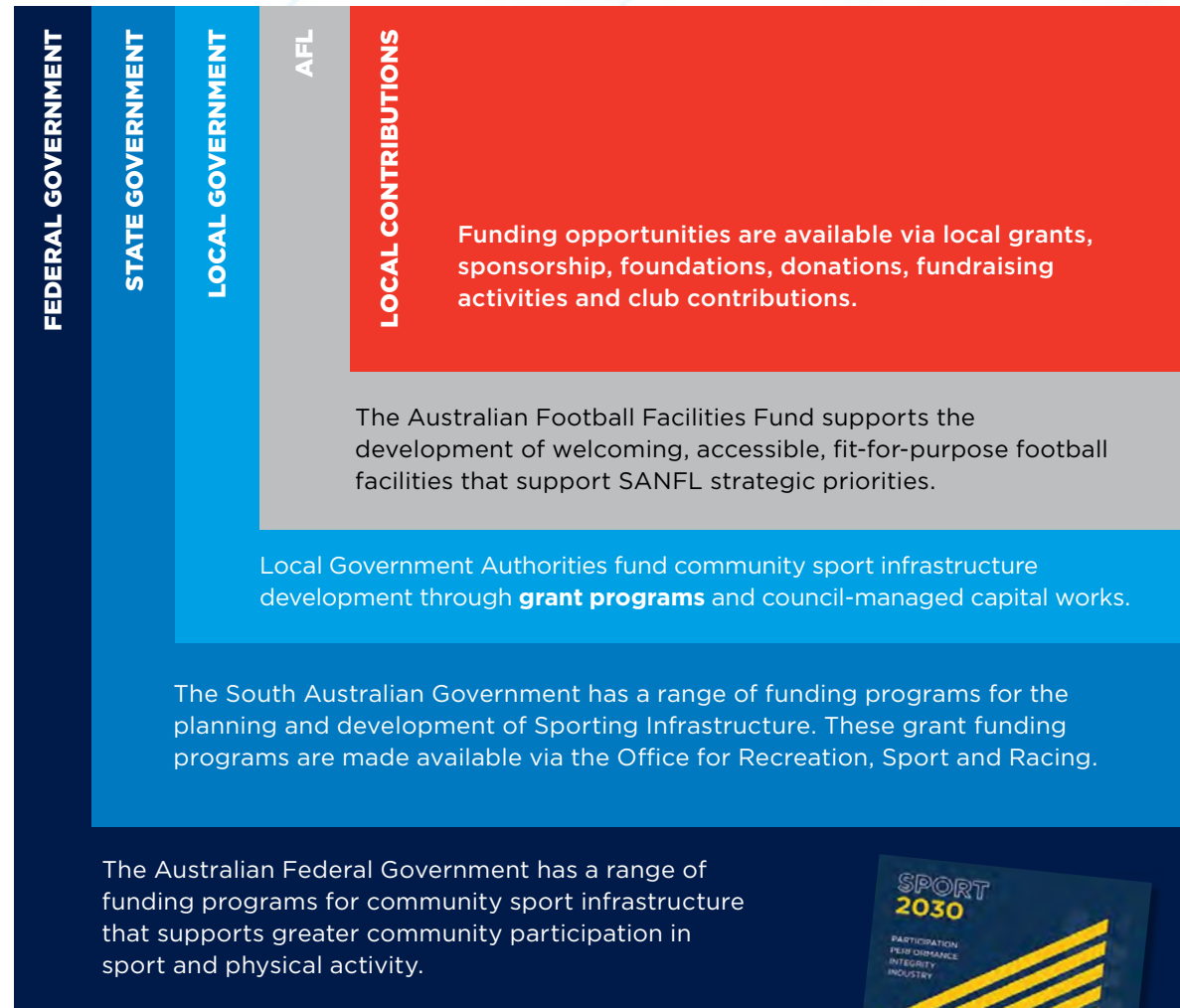
**Sporting facility development projects are delivered through partnerships consisting of a range of stakeholders and funding contributors.**

All levels of government provide facility development funding opportunities. Federal and State Governments provide funding via targeted grant programs that aim to increase participation and access to sport and recreation activities.

Local Government are the primary asset owner and manager of most community sporting facilities and provide a range of funding opportunities through grants, capital works programs and operating subsidies.

Partnerships between other sports, community and government stakeholders will continue to be vital in delivering the facilities needed to support Australian football participation.

Prioritising local infrastructure projects should be measured against the priorities within this Plan, LGA strategic planning and capital works budget cycles and external funding availability.



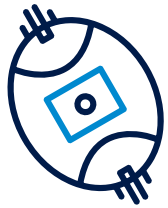


# Facility Analysis



## Football facilities snapshot

# 286 FOOTBALL VENUES



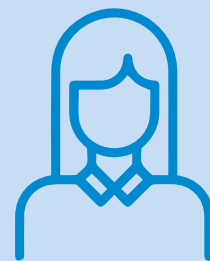
**299**  
PLAYING FIELDS



**604**  
CHANGE FACILITIES



**143**  
VENUES WITH FEMALE  
FOOTBALL PLAYED AT THEM



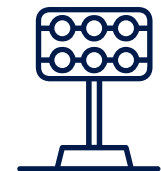
**20%**  
CHANGE  
FACILITIES  
ARE FEMALE  
FRIENDLY



**270**  
SITES WITH A PAVILION



**268**  
UMPIRE FACILITIES



**123**  
OVAL WITH 100+  
LUX LEVELS

## 14 Facility hierarchy



The AFL Community Facility Hierarchy classifies facilities into five levels based on the purpose of the facility and provision of facilities to service football activity. The Facility Hierarchy plays an important role in ensuring that the level of facility provision matches the level and type of use. For the purpose of this Plan, facilities are generally rated against the local facility classification.

Hierarchy Level	Description	Examples	No. of Sites
<b>Elite</b>	Elite level facilities provide match day venues for regular AFL seasonal fixtures and other major events. These venues are generally major stadiums, with playing facilities suitable for AFL competition, as well grandstand seating and amenities for spectators, lighting to support the televised broadcast of night matches and facilities to support commercial operations and media	Adelaide Oval	1
<b>State</b>	State level facilities primarily service State leagues and elite underage competitions and are seen as second tier competition facilities. These facilities are also used for competition finals as they are maintained to a showcase level, offering higher standard of amenities with perimeter fencing and the capacity to cater for larger crowds.	Norwood Oval	10
<b>Regional</b>	Regional level facilities service a collection of suburbs, townships or geographic areas within a municipality (or across municipal borders) and often cater for more than one code or activity. These facilities ideally have perimeter fencing to restrict vehicle and pedestrian access, amenities with capacity to host finals and representative games and have oval surface quality maintained to a high standard.	Mount Barker Summit Sport and Recreation Park	8
<b>Local</b>	Local facilities are designed to cater for local level competition within individual suburbs, townships, or municipalities and are usually also the 'home' of a seasonal club. Facilities and playing surfaces are provided to home and away competition standard only. However, local leagues should aspire to get local facilities used for finals to regional level standards.	Clare Oval	249
<b>Remote</b>	Like local level facilities, remote grounds cater for local level competition held in remote communities. Provision at these grounds is generally a dirt playing field with no or limited player, official or spectator amenities. At times, investment has been made at these venues to provide lighting to a level that supports night competition structures. Provision of night competition lighting addresses player welfare concerns in warmer climates.	Pukatja Oval	7
<b>Junior/School</b>	Junior/School facilities are used for the introductory forms of Australian football such as Auskick, junior or school competitions and act as overflow training venues. Generally, facility provision expectations are limited to oval size and condition and access outcomes are generally driven by individual negotiations with individual schools.	Scotch College	11



# The state of facilities

The AFL's National Facility Audit program is conducted annually, providing an audit and refresh of data at every community football venue and their associated grounds in Australia. SANFL's latest audit insights (as at May 2021) are presented below.

CLUB PLAYING FIELDS (OVALS) 286 venues/299 ovals	PAVILIONS & CHANGE ROOMS 270 pavilions and 604 player change rooms	UMPIRE AMENITIES 268 umpire facilities	ALL GENDER CAPACITY	LIGHTING LEVELS 276 sites provide floodlighting	SUPPORTING AMENITIES
<p><b>23</b> (8%) of ovals are below the minimum length for community level football (less than 135m). <b>27</b> (9%) grounds are below the minimum width for community level football (less than 110m)</p> <p><b>33%</b> of grounds are rated poor to very poor in surface condition</p> <p><b>85%</b> of ovals <b>provide</b> automated irrigation systems <b>41%</b> have drainage that is in good operating condition</p>	<p>95% of venues <b>provide</b> pavilions</p> <p>62% of pavilions have a social or multi purpose room greater than 200m<sup>2</sup></p> <p>98% of venues <b>provide</b> player change facilities</p> <p>36% of player change facilities <b>do not meet</b> minimum size (45m<sup>2</sup>)</p>	<p>93% of venues <b>provide</b> umpire change facilities</p> <p>37% of umpire change facilities <b>are in</b> poor to very poor condition</p> <p>74% of umpire change facilities <b>do not</b> meet the minimum size requirements (&lt;20m<sup>2</sup>) for local club level</p>	<p>80% of change facilities <b>do not cater</b> for all genders</p> <p>77% of umpire change facilities <b>do not cater</b> for all genders</p> <p>Only 20% of all player shower amenities <b>are</b> lockable cubicles</p>	<p>59% of oval floodlighting does not meet minimum standard 100lux to host night matches</p> <p>19% of oval floodlighting provided does not <b>meet the minimum</b> 50 lux training standards</p>	<p>76% of ovals have a manual scoreboard present</p> <p>76% of sites either don't provide external covered viewing areas or the space is under the required 50m<sup>2</sup></p>

# 16 Inventory of football venues



Region	No. of sites	No. of Playing Fields	No. Change rooms	No. Ovals with 100+ lux levels
Adelaide Hills	21	23	44	7
Barossa	11	16	28	6
Eastern	8	10	16	4
Eyre and Western	32	31	62	21
Far North	23	19	42	8
Fleurieu	14	14	30	4
Limestone Coast	24	25	49	20
Murray and Mallee	25	25	53	1
Northern Adelaide	44	52	93	21
Southern Adelaide	34	34	79	13
Western Adelaide	12	13	27	9
Yorke and Mid North	38	37	81	9
TOTAL	286	299	604	123

# Facility provision ratios

The table below provide an overview of existing football field provision in South Australia, based on 1.78 million population figures and current registered player numbers per region. When considering field to population ratio, a benchmark of 1 field for every 5,000 people is used. When using this method all 4 metropolitan regions (Eastern, Northern, Southern Western) exceed this.

When considering field to player ratio, a benchmark of **175 registered players per field** is recommended (7 teams x 25 players). Across the state, 7 regions exceeds this benchmark. \*444 participants did not provide these details or reside outside of SA.

Region	Population est (2016)	No. of fields	Field to population ratio	No. of registered players	Field to player ratio
Adelaide Hills	100,778	23	4,381	5,326	231
Barossa	69,065	16	4,316	2,823	176
Eastern	138,787	10	13,878	3,239	324
Eyre and Western	39,353	31	1,269	3,757	121
Far North	55,323	19	2,911	2,942	155
Fleurieu	56,349	14	4,024	2,733	195
Limestone Coast	66,036	25	2,641	4,295	172
Murray and Mallee	47,960	25	1,918	3,089	123
Northern Adelaide	535,330	52	10,294	13,968	268
Southern Adelaide	416,992	34	12,264	15,265	449
Western Adelaide	183,814	13	14,139	5,166	397
Yorke and Mid North	77,453	37	2,093	4,671	126
<b>TOTAL</b>	<b>1,787,240</b>	<b>299</b>	<b>5,977</b>	<b>67,274*</b>	<b>225</b>





# Statewide Strategic Framework

# Statewide strategic framework

The Statewide Facility Priorities framework has been developed following consultation with football stakeholders and the analysis of participation and facility data forecasting to 2032. The Statewide Facility Priorities ensure a targeted, strategic approach to the investment of resources and funds so that the goals and objectives of the plan are achieved resulting in quality football facilities at all levels across South Australia that meet the needs of our participants now and in the future.

<b>SANFL Vision</b>	<b>Connecting communities through the enjoyment of footy</b>				
<b>SANFL Purpose</b>	<b>Promote, encourage. Lead, develop and manage the game of football in South Australia</b>				
<b>GOAL</b>	<b>1. Welcoming facilities</b>	<b>2. Growing venue capacity</b>	<b>3. Planning for growth</b>	<b>4. Building partnerships</b>	<b>5. Quality State level venues</b>
<b>OBJECTIVES</b>	<b>Our facilities meet the needs of our football community (players, officials, volunteers, and spectators) at all levels.</b>	<b>Venue capacity is maximised by improving quality of ovals, lighting and supporting infrastructure.</b>	<b>Growing communities have access to quality football facilities.</b>	<b>Our partnerships are valued and achieve shared outcomes.</b>	<b>We have a sustainable network of SANFL State League Venues that support talent and competition growth</b>
<b>PRIORITIES</b>	<ul style="list-style-type: none"> <li>Provide all gender changerooms for all those that participate in football – players, officials and umpires.</li> <li>Provide welcoming and functional facilities that enhance the experience for volunteers and spectators.</li> <li>Ensure design of facilities encourages broader community use and shared opportunities.</li> </ul>	<ul style="list-style-type: none"> <li>Increase the provision of quality lighting on ovals to deliver greater participation opportunities.</li> <li>Identify projects where carrying capacity can be increased by upgrading playing surfaces through improved drainage, irrigation, and turf management.</li> <li>Support the provision of multi-purpose and functional facilities that support club culture and sustainability, including the use of modular buildings.</li> </ul>	<ul style="list-style-type: none"> <li>Partner with LGAs on the future planning and development of football facilities to accommodate population growth.</li> <li>Explore opportunities to secure access to school facilities to meet gaps in oval and amenity provision.</li> <li>Explore opportunities to develop new synthetic or hybrid surface ovals in areas of growth.</li> </ul>	<ul style="list-style-type: none"> <li>Advocate for co-investment into football infrastructure projects at all levels (grassroots, regional and talent venues).</li> <li>Campaign for the continuation of funding programs to achieve shared outcomes from all levels of government and National Sporting bodies.</li> <li>Partner with LGA's, State Government agencies and other sporting codes to identify opportunities to reach shared goals.</li> </ul>	<ul style="list-style-type: none"> <li>Ensure facilities match the needs required to facilitate participation pathways, including high Performance.</li> <li>State level venues should: <ul style="list-style-type: none"> <li>Provide amenities for girls and women's football</li> <li>Deliver enhanced quality talent and/or pathway environments</li> <li>Cater for participation and/or population growth</li> <li>Improve spectator viewing and experiences</li> <li>Provide access to a new oval for football</li> <li>Enhances match day management</li> </ul> </li> <li>SANFL State Level Venues should be upgraded/developed inline with SANFL State League Facility Framework.</li> </ul>

## 20 Stakeholder responsibilities for implementation

**The following project partners will be imperative to the Plan's delivery. The role of each partner in the Plan's implementation is summarised below.**

### SANFL

SANFL will play a lead role in coordinating, driving, implementing and monitoring the Plan and its recommendations. As the owner of the Plan, SANFL must be proactive in establishing and maintaining strong networks with partners. In addition, SANFL must ensure that the Plan becomes and remains an important reference point in the strategic planning of project partners, including that of local and state government. It is imperative that SANFL continue to work with other State Sporting Organisations in the development and funding of multipurpose facilities.

### LOCAL GOVERNMENT

LGAs have a core responsibility to deliver local infrastructure that benefits the health and social outcomes of the community. The development of the Plan aims to align priorities for all project partners, including LGAs, to generate mutual benefit. LGAs will play a crucial role in collaboratively planning for new, improved and revitalised infrastructure as well as participation and club development initiatives. LGAs are encouraged to support the priorities within the Plan and consider the delivery of infrastructure in line with its objectives and available resources.

### SOUTH AUSTRALIAN GOVERNMENT

The South Australian Government will play a key support role in the funding of strategic initiatives and in promoting the benefits of the SANFL Infrastructure Plan. It will also be responsible for ensuring continued focus is given to the delivery of Plan, for the greater benefit of the football Region's and the South Australian community.

### EDUCATION PROVIDERS

Building strong relationships with schools within each Region along with the Department of Education will be imperative in facilitating increased access to school grounds. Partnerships between project stakeholders and the Department of Education will aim to improve usage and the potential investment into school venues where broader community outcomes can be demonstrated.

### LEAGUES/ASSOCIATIONS

Football Leagues and Associations are encouraged to support the delivery of the priorities and to work with SANFL and stakeholders to improve collaborative planning into football facilities and the delivery of the game. Leagues/Associations will also continue to be a critical liaison between SANFL, LGAs and Clubs.

### CLUBS

Football Clubs are essential to the delivery of the game and growing participation at the grassroots level. In addition, Clubs will be required to work collaboratively with their League/Association, LGA and SANFL in facility development planning to ensure proposals and developments meet the objectives of all stakeholders.



# Measuring success

## MONITORING AND EVALUATION

Formal evaluation of strategic priorities, active campaigns and critical actions by SANFL and partners will be required to ensure ongoing and consistent alignment with government and regional objectives.

The data platforms provided through Sports Facility Auditor – AFL provide for the ongoing updating of data and information and should be used as a consistent source to inform evaluation methodologies.

Evaluation of strategic outcomes should also identify key success and overall benefits for football and the communities in which it is played. The following monitoring and review process will be led by SANFL to ensure the SANFL Infrastructure Plan remains relevant for all stakeholders.

## IMPLEMENTATION CHALLENGES

SANFL understands the funding constraints within the public sector and fully appreciates the challenging financial climate and competing priorities that all local government authorities delicately balance in each and every local community.

State and local governments face a difficult task in allocating finite funding in an equitable manner with health, education, transport and aged care just a sample of the important services required in any community setting.

Whilst the long-term health benefits of providing communities with places and facilities that encourage active lifestyles are well known, the initial financial outlay to construct football facilities is significant. A long community health pay back period combined with a typically discounted tenancy and maintenance responsibilities can detract from football investments in sports fields and gender neutral change rooms.

The solution therefore lies in a collaboration and engagement approach that:

- Identifies football sites requiring upgrades are eligible for joint funding, or third-party funding opportunities.
- Prioritise opportunities and upgrades based on participation rates and demand within specific sites to achieve the best community outcomes.





## Appendix 1 Regional summaries

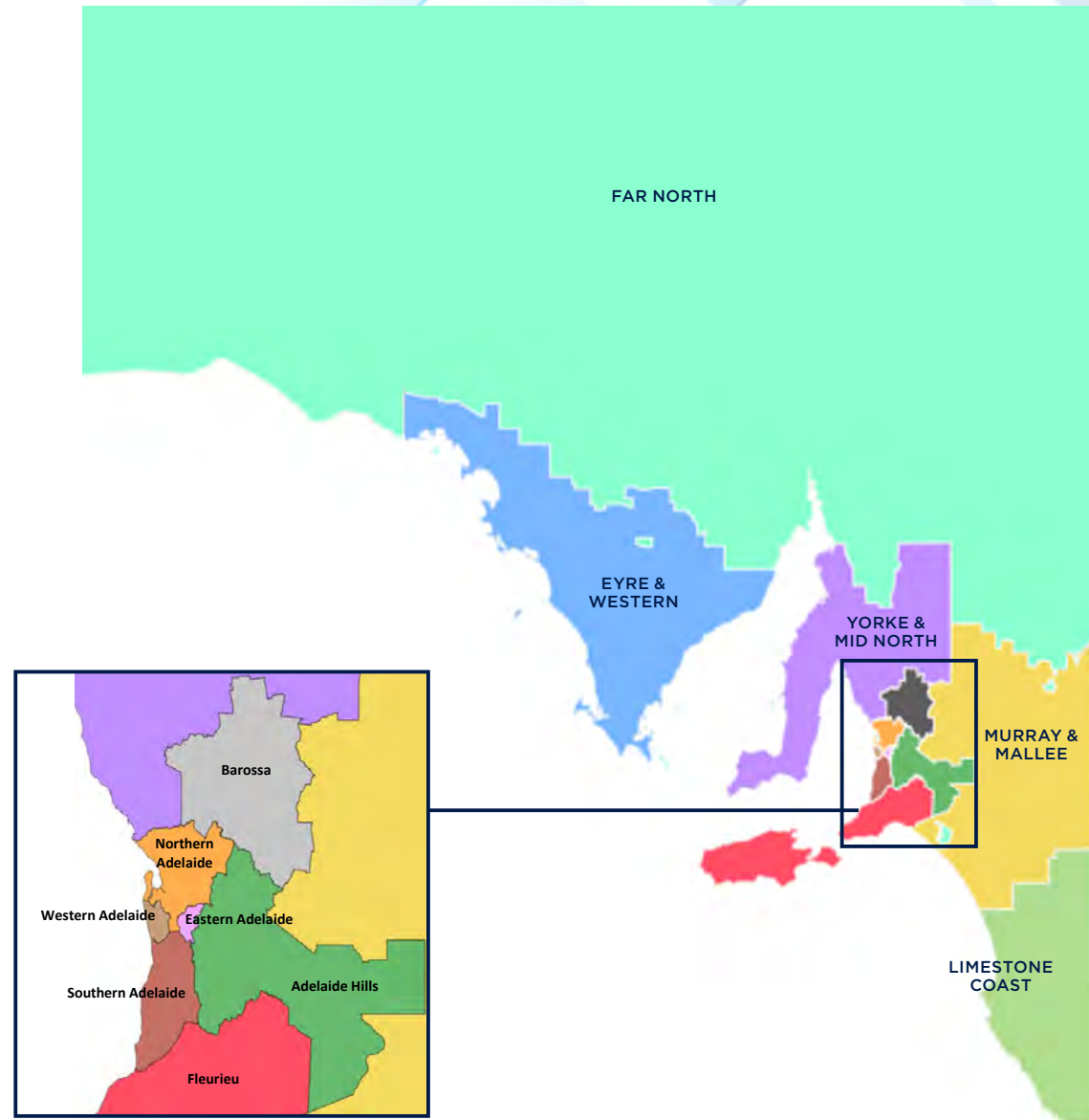
# SANFL planning regions

To implement the Statewide Facility Priorities framework and to provide localised targets, the Regional Summaries offer greater context, data analysis and strategic priorities for each SANFL Planning Region.

For the purpose of this plan and for efficient future planning and alignment with key stakeholders, a combination of SANFL zone regions, previous strategies and the SA State Government Administrative regions (2019) have been used to divide the state into 12 key regions.

Each regional summary provides the following insights:

- Regional overview
- A summary of football participation across the region
- Participation change implications / growth
- Facility provision and audit findings
- A framework for the delivery of the Strategic Priorities as they relate to each region. This includes targets for the next 10 years.





## 24 Adelaide Hills region

The Adelaide Hills region comprises of the 3 partner LGAs:

- Adelaide Hills
- Mount Barker
- Murray Bridge

The Region has seen a 66% increase in participation since 2014 to 2019. It has one of the largest football leagues within the Region, being the Hills Football League. The Region has seen a significant increase in female participation since 2014 (1,059%), this is the second largest increase across SA.

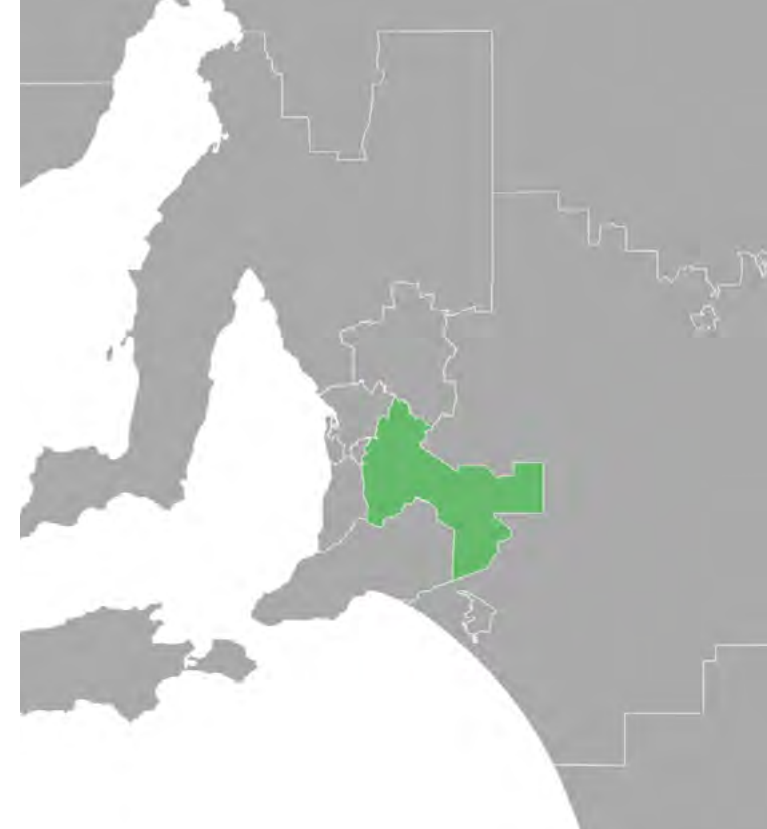


**100,778**

People live in the Adelaide Hills Region

**5.3%**

of the population participate in Football activities



TOTAL PARTICIPATION				
	Overall		Female	
2014	3,202	↑	64	↑
2019	5,326	66%	742	1,059%
2019 %				
	■ Club ■ Auskick		■ Club ■ Auskick	

POTENTIAL PARTICIPATION GROWTH			
Current participation 2019	Potential 2026 participation	Potential 2031 participation	Projected additional players by 2031
5,326	5,568	5,704	378

FACILITY PROVISION				
Sites	<b>21</b> No. of sites	<b>23</b> No. of playing fields	<b>1: 4,381</b> Field to population ratio	<b>1: 231</b> Field to player ratio
Playing fields	<b>100%</b> Meet the minimum 3m run off standard	<b>70%</b> Ovals with irrigation	<b>13%</b> Excellent <b>17%</b> Good <b>52%</b> Moderate <b>17%</b> Poor Surface condition	<b>7</b> Ovals with 100+ Lux lighting
Change facilities	<b>44</b> No. Of change facilities	<b>52%</b> Change rooms size is <45m <sup>2</sup>	<b>29%</b> Rated either poor or very poor condition	<b>7%</b> Female friendly
Pavilion/ umpires rooms	<b>21</b> Pavilions	<b>90%</b> Have social area greater than 100m <sup>2</sup>	<b>95%</b> Have umpire facilities	<b>30%</b> Female friendly umpire rooms

GOAL	2032 TARGETS
Welcoming facilities	60% of player and umpire change rooms will be female friendly and in line with the AFL Facility Guidelines.
Growing venue capacity	<ul style="list-style-type: none"> <li>50% of ovals will be rated as good or excellent surface condition.</li> <li>60% of playing fields will have match standard lighting (100 lux levels)</li> </ul>
Planning for growth	There is increased access to new playing fields (including the use of school sites)

# 26 Barossa region

The Barossa region comprises of 3 partner LGAs:

- Barossa
- Gawler
- Light Regional

The Region has seen a 76% increase in participation since 2014 to 2019. It has one of the largest football leagues, being the Barossa Light and Gawler Football League.



TOTAL PARTICIPATION				
	Overall		Female	
2014	1,624	↑	44	↑
2019	2,823	74%	402	814%
2019 %				
	■ Club	■ Auskick	■ Club	■ Auskick

POTENTIAL PARTICIPATION GROWTH			
Current participation 2019	Potential 2026 participation	Potential 2031 participation	Projected additional players by 2031
2,823	3,184	3,321	498



FACILITY PROVISION				
Sites	<b>11</b> No. of sites	<b>16</b> No. of playing fields	<b>1: 4,316</b> Field to population ratio	<b>1: 176</b> Field to player ratio
Playing fields	<b>100%</b> Meet the minimum 3m run off standard	<b>100%</b> Ovals with irrigation	<b>13%</b> Excellent <b>75%</b> Good <b>13%</b> Moderate Surface condition	<b>6</b> Ovals with 100+ Lux lighting
Change facilities	<b>28</b> No. Of change facilities	<b>79%</b> Change rooms size is <45m <sup>2</sup>	<b>11%</b> Rated either poor or very poor condition	<b>36%</b> Female friendly
Pavilion/ umpires rooms	<b>11</b> Pavilions	<b>90%</b> Have social area greater than 100m <sup>2</sup>	<b>100%</b> Have umpire facilities	<b>50%</b> Female friendly umpire rooms

GOAL	2032 TARGETS
Welcoming facilities	<ul style="list-style-type: none"> <li>60% of change facilities will meet the minimum size of 45m<sup>2</sup>.</li> <li>60% of player and umpire change rooms are female friendly and in line with the AFL Facility Guidelines</li> </ul>
Growing venue capacity	<ul style="list-style-type: none"> <li>100% of ovals will be rated as good or excellent surface condition.</li> <li>80% of playing fields will have match standard lighting (100 lux levels)</li> </ul>
Planning for growth	There is increased access to new playing fields (including the use of school sites)

## 28 Eastern Adelaide region

The Eastern Adelaide region comprises of the 3 partner LGAs:

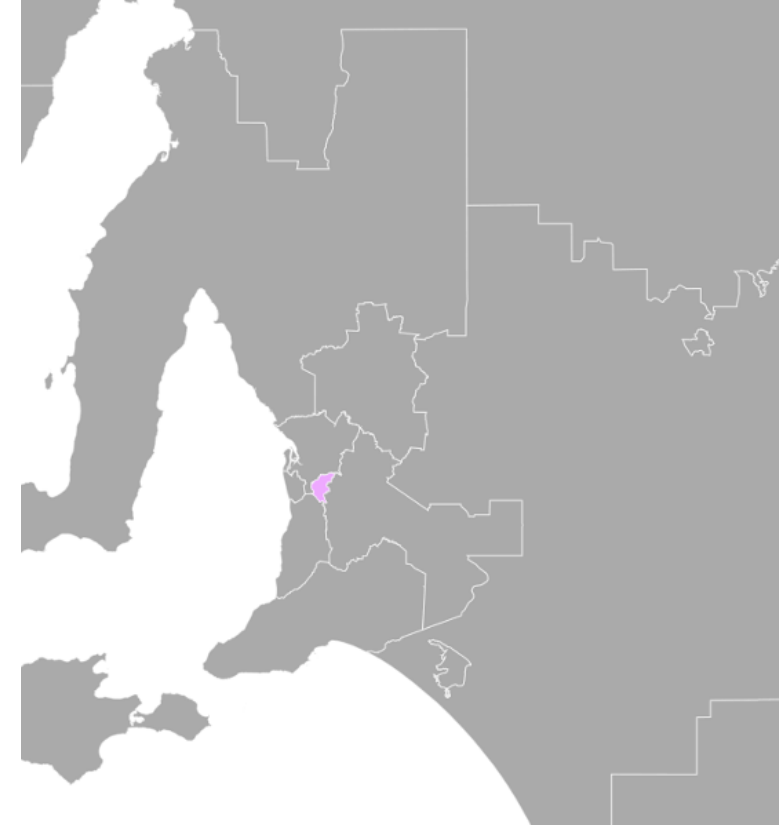
- Burnside
- Campbelltown
- Norwood Payneham and St Peters.

The Region has seen a 73% increase in participation since 2014 to 2019. Majority of participants play in either the SANFL Juniors or the Adelaide Footy League within this Region. The club with the largest membership in the Eastern Region is Glenunga Football Club.



**138,787**  
People live in the  
Eastern Adelaide  
Region

**2.4%**  
of the population  
participate in  
Football activities



TOTAL PARTICIPATION				
	Overall		Female	
2014	1,535	↑	90	↑
2019	3,239	111%	481	434%
2019 %				
	■ Club ■ Auskick		■ Club ■ Auskick	

POTENTIAL PARTICIPATION GROWTH			
Current participation 2019	Potential 2026 participation	Potential 2031 participation	Projected additional players by 2031
3,239	3,357	3,462	223

FACILITY PROVISION				
Sites	<b>8</b> No. of sites	<b>10</b> No. of playing fields	<b>1: 13,878</b> Field to population ratio	<b>1: 324</b> Field to player ratio
Playing fields	<b>100%</b> Meet the minimum 3m run off standard	<b>91%</b> Ovals with irrigation	<b>40%</b> Excellent <b>20%</b> Good <b>40%</b> Moderate Surface condition	<b>4</b> Ovals with 100+ Lux lighting
Change facilities	<b>16</b> No. Of change facilities	<b>88%</b> Change rooms size is <45m <sup>2</sup>	<b>31%</b> Rated either poor or very poor condition	<b>25%</b> Female friendly
Pavilion/ umpires rooms	<b>8</b> Pavilions	<b>50%</b> Have social area greater than 100m <sup>2</sup>	<b>100%</b> Have umpire facilities	<b>30%</b> Female friendly umpire rooms

GOAL	2032 TARGETS
Welcoming facilities	70% of player and umpire change rooms will be female friendly and in line with the AFL Facility Guidelines
Growing venue capacity	80% of playing fields will have match standard lighting (100 lux levels).
Planning for growth	There is increased access to new playing fields at school sites.
Quality State level venues	Norwood Oval continues to function inline with the recommendations of the SANFL State League Facility Framework.



## 30 Eyre & Western region

The Eyre and Western region comprises of the following 11 partner LGAs:

- Ceduna
- Franklin Harbour
- Lower Eyre Peninsula
- Unincorporated SA
- Cleve
- Kimba
- Port Lincoln
- Tumby Bay
- Elliston
- Ceduna
- Streaky Bay
- Wudinna

The Region has seen a 35% increase in participation since 2014 to 2019. Players mainly play in the Port Lincoln, Eastern Eyre, Far West, Great Flinders Football Leagues. This Region is predicted to have a decrease of 215 players by 2031.



**39,353**  
People live in  
the Eyre and  
Western Region

**9.5%**  
of the population  
participate in  
Football activities



TOTAL PARTICIPATION				
	Overall		Female	
2014	2,782	↑	31	↑
2019	3,757	35%	209	574%
2019 %				
	■ Club	■ Auskick	■ Club	■ Auskick

POTENTIAL PARTICIPATION GROWTH			
Current participation 2019	Potential 2026 participation	Potential 2031 participation	Projected additional players by 2031
3,757	3,599	3,542	-215

FACILITY PROVISION				
<b>Sites</b>	<b>32</b> No. of sites	<b>31</b> No. of playing fields	<b>1: 1,269</b> Field to population ratio	<b>1: 121</b> Field to player ratio
<b>Playing fields</b>	<b>100%</b> Meet the minimum 3m run off standard	<b>100%</b> Ovals with irrigation	<b>10%</b> Excellent <b>48%</b> Good <b>29%</b> Moderate <b>13%</b> Poor Surface condition	<b>21</b> Ovals with 100+ Lux lighting
<b>Change facilities</b>	<b>62</b> No. Of change facilities	<b>90%</b> Change rooms size is <45m <sup>2</sup>	<b>31%</b> Rated either poor or very poor condition	<b>3%</b> Female friendly
<b>Pavilion/ umpires rooms</b>	<b>31</b> Pavilions	<b>97%</b> Have social area greater than 100m <sup>2</sup>	<b>91%</b> Have umpire facilities	<b>21%</b> Female friendly umpire rooms

GOAL	2032 TARGETS
<b>Welcoming facilities</b>	50% of player and umpire change rooms are female friendly and in line with the AFL Facility Guidelines.
<b>Growing venue capacity</b>	85% of playing fields will have match standard lighting (100 lux levels).
<b>Building partnership</b>	Ongoing training, education and facility planning tools are provided to leagues and clubs to assist them to understand the process and requirements for securing funding for an infrastructure project.

# 32 Far North region

The Far North region comprises of the following 9 partner LGAs:

- Coober Pedy
- Mount Remarkable
- Orroroo Carrieton
- Port Augusta
- Whyalla
- Flinders Rangers
- Northern Areas
- Peterborough
- Roxby Downs

The Region has seen a 26% increase in participation since 2014 to 2019. The largest league in the Region is the Whyalla Football League, closely followed by the Spencer Gulf Football League. Central Augusta Football Club is the largest in the Region in regard to membership numbers.



**55,323**  
People live in the  
Far North Region

**5.4%**  
of the population  
participate in  
Football activities

TOTAL PARTICIPATION				
	Overall		Female	
2014	2,341	↑	44	↑
2019	2,942	26%	229	420%
2019 %				
	■ Club	■ Auskick	■ Club	■ Auskick

POTENTIAL PARTICIPATION GROWTH			
Current participation 2019	Potential 2026 participation	Potential 2031 participation	Projected additional players by 2031
2,942	2,975	2,967	25



FACILITY PROVISION				
<b>Sites</b>	<b>23</b> No. of sites	<b>19</b> No. of playing fields	<b>1: 2,911</b> Field to population ratio	<b>1: 155</b> Field to player ratio
<b>Playing fields</b>	<b>95%</b> Meet the minimum 3m run off standard	<b>100%</b> Ovals with irrigation	<b>11%</b> Excellent <b>53%</b> Good <b>32%</b> Moderate <b>5%</b> Poor Surface condition	<b>8</b> Ovals with 100+ Lux lighting
<b>Change facilities</b>	<b>42</b> No. Of change facilities	<b>69%</b> Change rooms size is <45m <sup>2</sup>	<b>7%</b> Rated either poor or very poor condition	<b>36%</b> Female friendly
<b>Pavilion/ umpires rooms</b>	<b>21</b> Pavilions	<b>78%</b> Have social area greater than 100m <sup>2</sup>	<b>65%</b> Have umpire facilities	<b>29%</b> Female friendly umpire rooms

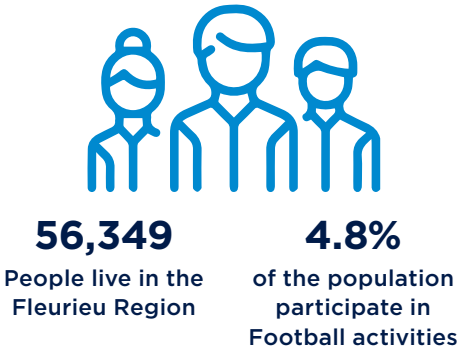
GOAL	2032 TARGETS
<b>Welcoming facilities</b>	<ul style="list-style-type: none"> <li>85% of sites will provide umpire facilities.</li> <li>70% of player and umpire change rooms are female friendly and in line with the AFL Facility Guidelines.</li> </ul>
<b>Growing venue capacity</b>	50% of playing fields will have match standard lighting (100 lux levels)
<b>Building partnership</b>	Ongoing training, education and facility planning tools are provided to leagues and clubs to assist them to understand the process and requirements for securing funding for an infrastructure project.

# 34 Fleurieu region

The Fleurieu region comprises of the following 4 partner LGAs:

- Alexandrina
- Kangaroo Island
- Victor Harbor
- Yankalilla

The Region has seen a 46% increase in participation since 2014 to 2019. Majority of participants play in the Great Southern Football League. The club with the largest membership in the Region is the Goolwa/Pt Elliot Football Club, closely followed by Strathalbyn Football Club. The Fleurieu Region has seen the largest increase in female participation since 2014 to 2019 (1159%).



TOTAL PARTICIPATION				
	Overall		Female	
2014	1,877	↑	44	↑
2019	2,733	46%	554	1,159%
2019 %				
	■ Club	■ Auskick	■ Club	■ Auskick

POTENTIAL PARTICIPATION GROWTH			
Current participation 2019	Potential 2026 participation	Potential 2031 participation	Projected additional players by 2031
2,733	3,030	3,183	450

FACILITY PROVISION				
<b>Sites</b>	<b>14</b> No. of sites	<b>14</b> No. of playing fields	<b>1: 4,024</b> Field to population ratio	<b>1: 195</b> Field to player ratio
<b>Playing fields</b>	<b>94%</b> Meet the minimum 3m run off standard	<b>94%</b> Ovals with irrigation	<b>7%</b> Excellent <b>57%</b> Good <b>29%</b> Moderate <b>7%</b> Poor Surface condition	<b>4</b> Ovals with 100+ Lux lighting
<b>Change facilities</b>	<b>30</b> No. Of change facilities	<b>76%</b> Change rooms size is <45m <sup>2</sup>	<b>27%</b> Rated either poor or very poor condition	<b>20%</b> Female friendly
<b>Pavilion/ umpires rooms</b>	<b>14</b> Pavilions	<b>93%</b> Have social area greater than 100m <sup>2</sup>	<b>79%</b> Have umpire facilities	<b>8%</b> Female friendly umpire rooms

GOAL	2032 TARGETS
<b>Welcoming facilities</b>	55% of player and umpire change rooms are female friendly and in line with the AFL Facility Guidelines.
<b>Growing venue capacity</b>	60% of playing fields will have match standard lighting (100 lux levels).
<b>Planning for growth</b>	We have partnered with local government to ensure that active open space planning includes provision for AFL facility requirements.
<b>Building partnership</b>	Ongoing training, education and facility planning tools are provided to leagues and clubs to assist them to understand the process and requirements for securing funding for an infrastructure project.



## 36 Limestone Coast region

The Limestone Coast region comprises of the following 7 partner LGAs:

- Grant
- Mount Gambier
- Robe
- Wattle Range
- Kingston
- Naracoorte and Lucindale
- Tatiara

The Region has seen a 37% increase in participation since 2014 to 2019. The largest league in the Region based on members is Mid South Eastern Football League, closely followed by the Western Border Football League. The club with the largest membership in the Region is South Gambier Football Club.



**66,036**  
People live in the  
Limestone Coast  
Region

**6.5%**  
of the population  
participate in  
Football activities

TOTAL PARTICIPATION				
	Overall		Female	
2014	3,123	↑	75	↑
2019	4,295	37%	462	516%
2019 %				
	■ Club ■ Auskick		■ Club ■ Auskick	

POTENTIAL PARTICIPATION GROWTH			
Current participation 2019	Potential 2026 participation	Potential 2031 participation	Projected additional players by 2031
4,295	3,567	2,628	-1,667

The City of Mount Gambier has the largest population of the region. It has seen an 11% growth in population since 2006. It is expected to continue to grow by another 8% by 2036.

FACILITY PROVISION				
Sites	<b>24</b> No. of sites	<b>25</b> No. of playing fields	<b>1: 2,641</b> Field to population ratio	<b>1: 172</b> Field to player ratio
Playing fields	<b>92%</b> Meet the minimum 3m run off standard	<b>96%</b> Ovals with irrigation	<b>12%</b> Excellent <b>56%</b> Good <b>28%</b> Moderate <b>4%</b> Poor Surface condition	<b>20</b> Ovals with 100+ Lux lighting
Change facilities	<b>49</b> No. Of change facilities	<b>90%</b> Change rooms size is <45m <sup>2</sup>	<b>14%</b> Rated either poor or very poor condition	<b>16%</b> Female friendly
Pavilion/ umpires rooms	<b>24</b> Pavilions	<b>98%</b> Have social area greater than 100m <sup>2</sup>	<b>100%</b> Have umpire facilities	<b>16%</b> Female friendly umpire rooms

GOAL	2032 TARGETS
Welcoming facilities	40% of player and umpire change rooms are female friendly and in line with the AFL Facility Guidelines.
Growing venue capacity	Lighting provision is maintained at high levels across the region (85%)
Building partnership	Ongoing training, education and facility planning tools are provided to leagues and clubs to assist them to understand the process and requirements for securing funding for an infrastructure project.

## 38 Murray & Mallee region

The Murray and Mallee region comprises of 7 partner LGAs:

- Berri and Barmera
- Karoonda East Murray
- Mid Murray
- Southern Mallee
- Coorong
- Loxton Waikerie
- Renmark Paringa

The Region has seen a 48% increase in participation since 2014 to 2019. The largest league in the Region based on members is the Riverland Football League. The club with the largest membership in the Region is Renmark Football Club, closely followed by Loxton Football Club.



**47,960**

People live in the  
Murray and Mallee  
Region

**6.4%**

of the population  
participate in  
Football activities

TOTAL PARTICIPATION				
	Overall		Female	
2014	2,080	↑	43	↑
2019	3,089	48%	313	628%
2019 %				
	■ Club ■ Auskick		■ Club ■ Auskick	

POTENTIAL PARTICIPATION GROWTH			
Current participation 2019	Potential 2026 participation	Potential 2031 participation	Projected additional players by 2031
3,089	2,861	2,754	-335



FACILITY PROVISION				
Sites	<b>25</b> No. of sites	<b>25</b> No. of playing fields	<b>1: 1,918</b> Field to population ratio	<b>1: 123</b> Field to player ratio
Playing fields	<b>96%</b> Meet the minimum 3m run off standard	<b>100%</b> Ovals with irrigation	<b>76%</b> Excellent <b>24%</b> Good Surface condition	<b>1</b> Ovals with 100+ Lux lighting
Change facilities	<b>53</b> No. Of change facilities	<b>50%</b> Change rooms size is <45m <sup>2</sup>	<b>10%</b> Rated either poor or very poor condition	<b>13%</b> Female friendly
Pavilion/ umpires rooms	<b>21</b> Pavilions	<b>80%</b> Have social area greater than 100m <sup>2</sup>	<b>96%</b> Have umpire facilities	<b>8%</b> Female friendly umpire rooms

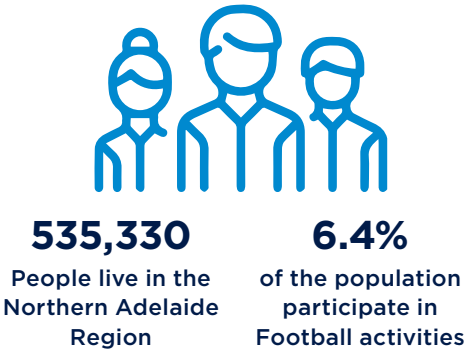
GOAL	2032 TARGETS
Welcoming facilities	Increasing female-friendly change facility provision to 40% by 2031.
Growing venue capacity	By 2031 have 30% of ovals with match standard lighting (100+ lux levels).
Building partnership	Ongoing training, education and facility planning tools are provided to leagues and clubs to assist them to understand the process and requirements for securing funding for an infrastructure project.

# 40 Northern Adelaide region

The Northern Adelaide region comprises of the following 7 partner LGAs:

- Adelaide
- Playford
- Prospect
- Port Adelaide Enfield
- Salisbury
- Tea Tree Gully
- Walkerville

The Region has seen a 108% increase in participation since 2014 to 2019. The largest league in the Region based on members is SANFL Juniors and the Adelaide Footy League. The club with the largest membership in the Region is the Golden Grove JFC, closely followed by the Tea Tree Gully JFC. The Northern Adelaide Region has seen the second largest overall increase in participation within SA from 2014 to 2019 (108%).



TOTAL PARTICIPATION				
	Overall		Female	
2014	6,701	↑	523	↑
2019	13,968	108%	2,466	371%
2019 %				
	■ Club	■ Auskick	■ Club	■ Auskick

POTENTIAL PARTICIPATION GROWTH			
Current participation 2019	Potential 2026 participation	Potential 2031 participation	Projected additional players by 2031
13,968	14,979	15,429	1,461

FACILITY PROVISION				
Sites	<b>44</b> No. of sites	<b>52</b> No. of playing fields	<b>1: 10,294</b> Field to population ratio	<b>1: 268</b> Field to player ratio
Playing fields	<b>98%</b> Meet the minimum 3m run off standard	<b>98%</b> Ovals with irrigation	<b>25%</b> Excellent <b>52%</b> Good <b>13%</b> Moderate <b>8%</b> Poor <b>2%</b> Very poor Surface condition	<b>21</b> Ovals with 100+ Lux lighting
Change facilities	<b>93</b> No. Of change facilities	<b>49%</b> Change rooms size is <45m <sup>2</sup>	<b>35%</b> Rated either poor or very poor condition	<b>23%</b> Female friendly
Pavilion/ umpires rooms	<b>43</b> Pavilions	<b>89%</b> Have social area greater than 100m <sup>2</sup>	<b>84%</b> Have umpire facilities	<b>13%</b> Female friendly umpire rooms

GOAL	2032 TARGETS
Welcoming facilities	50% of player and umpire change rooms are female friendly and in line with the AFL Facility Guidelines.
Growing venue capacity	70% of playing fields will have match standard lighting (100 lux levels).
Planning for growth	There is increased access to new playing fields at school sites.
Quality State level venues	Elizabeth Oval and Prospect Oval developments are inline with the recommendations of the SANFL State League Facility Framework.



## 42 Southern Adelaide region

The Southern Adelaide region comprises of the following 5 partner LGAs:

- Holdfast Bay
- Mitcham
- Unley
- Marion
- Onkaparinga

The Region has seen an 87% increase in participation since 2014 to 2019. The largest league in the Region based on numbers is the Southern Football League. The club with the largest membership in the region is the Blackwood Football Club.



**416,992**

People live in the  
Southern Adelaide  
Region

**3.6%**

of the population  
participate in  
Football activities



TOTAL PARTICIPATION				
	Overall		Female	
2014	8,151	↑	387	↑
2019	15,265	87%	2,772	616%
2019 %				
	■ Club	■ Auskick	■ Club	■ Auskick

POTENTIAL PARTICIPATION GROWTH			
Current participation 2019	Potential 2026 participation	Potential 2031 participation	Projected additional players by 2031
15,265	15,538	15,695	430

FACILITY PROVISION				
<b>Sites</b>	<b>34</b> No. of sites	<b>34</b> No. of playing fields	<b>1: 12,264</b> Field to population ratio	<b>1: 449</b> Field to player ratio
<b>Playing fields</b>	<b>92%</b> Meet the minimum 3m run off standard	<b>94%</b> Ovals with irrigation	<b>3%</b> Excellent <b>53%</b> Good <b>35%</b> Moderate <b>9%</b> Poor Surface condition	<b>13</b> Ovals with 100+ Lux lighting
<b>Change facilities</b>	<b>79</b> No. Of change facilities	<b>59%</b> Change rooms size is <45m <sup>2</sup>	<b>28%</b> Rated either poor or very poor condition	<b>35%</b> Female friendly
<b>Pavilion/ umpires rooms</b>	<b>33</b> Pavilions	<b>91%</b> Have social area greater than 100m <sup>2</sup>	<b>94%</b> Have umpire facilities	<b>33%</b> Female friendly umpire rooms

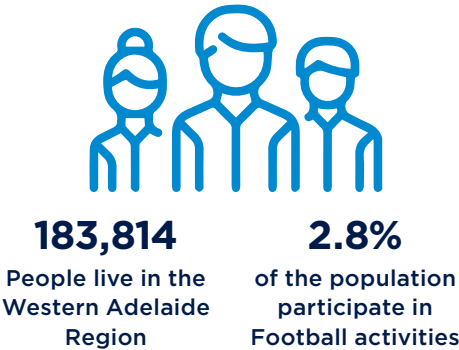
GOAL	2032 TARGETS
<b>Welcoming facilities</b>	70% of player and umpire change rooms are female friendly and in line with the AFL Facility Guidelines.
<b>Growing venue capacity</b>	65% of playing fields will have match standard lighting (100 lux levels).
<b>Planning for growth</b>	There is increased access to new playing fields (including use of school sites).
<b>Quality State level venues</b>	Unley Oval, Glenelg Oval and Noarlunga Oval are developed inline with the recommendations of the SANFL State League Facility Framework.

# 44 Western Adelaide region

The Western Adelaide region comprises of the following 2 partner LGAs:

- Charles Sturt
- West Torrens

The Region has seen a 127% increase in participation since 2014 to 2019. The largest league in the Region based on members is the Adelaide Footy League. The club with the largest membership in the Region is Henley Junior Football Club, closely followed by Flinders Park Football Club. The Western Adelaide Region has seen the largest overall increase in participation within SA from 2014 to 2019 (127%).



TOTAL PARTICIPATION				
	Overall		Female	
2014	2,270	↑	177	↑
2019	5,166	127%	866	389%
2019 %				
	■ Club	■ Auskick	■ Club	■ Auskick

POTENTIAL PARTICIPATION GROWTH			
Current participation 2019	Potential 2026 participation	Potential 2031 participation	Projected additional players by 2031
5,166	5,648	5,881	715

FACILITY PROVISION				
Sites	<b>12</b> No. of sites	<b>13</b> No. of playing fields	<b>1: 14,139</b> Field to population ratio	<b>1: 397</b> Field to player ratio
Playing fields	<b>100%</b> Meet the minimum 3m run off standard	<b>92%</b> Ovals with irrigation	<b>15%</b> Excellent <b>46%</b> Good <b>31%</b> Moderate <b>8%</b> Poor Surface condition	<b>9</b> Ovals with 100+ Lux lighting
Change facilities	<b>27</b> No. Of change facilities	<b>44%</b> Change rooms size is <45m <sup>2</sup>	<b>40%</b> Rated either poor or very poor condition	<b>22%</b> Female friendly
Pavilion/ umpires rooms	<b>21</b> Pavilions	<b>91%</b> Have social area greater than 100m <sup>2</sup>	<b>92%</b> Have umpire facilities	<b>42%</b> Female friendly umpire rooms

GOAL	2032 TARGETS
Welcoming facilities	60% of player and umpire change rooms are female friendly and in line with the AFL Facility Guidelines.
Growing venue capacity	85% of playing fields will have match standard lighting (100 lux levels).
Planning for growth	There is increased access to new playing fields (including use of school sites).
Quality State level venues	Woodville Oval, Thebarton Oval and Richmond Oval are developed inline with the recommendations of the SANFL State League Facility Framework.



# 46 Yorke & Mid North region

The Yorke and Mid North region comprises of the following LGAs:

- Adelaide Plains
- Clare and Gilbert Valley
- Goyder
- Wakefield
- Barunga West
- Copper Coast
- Port Pirie
- Yorke Peninsula

The Region has seen a 36% increase in participation since 2014 to 2019. The largest league in the Region based on members is the Yorke Peninsula Football League. The club with the largest membership in the Region is Proprietary/ Risdon Football Club, closely followed by Solomontown Football Club.



**77,453**  
People live in the  
Yorke and Mid  
North Region

**6%**  
of the population  
participate in  
Football activities



TOTAL PARTICIPATION				
	Overall		Female	
2014	3,442	↑	44	↑
2019	4,671	36%	420	854%
2019 %				
	■ Club	■ Auskick	■ Club	■ Auskick

POTENTIAL PARTICIPATION GROWTH			
Current participation 2019	Potential 2026 participation	Potential 2031 participation	Projected additional players by 2031
4,671	4,737	4,789	118

FACILITY PROVISION				
Sites	<b>37</b> No. of sites	<b>38</b> No. of playing fields	<b>1: 2,093</b> Field to population ratio	<b>1: 126</b> Field to player ratio
Playing fields	<b>98%</b> Meet the minimum 3m run off standard	<b>100%</b> Ovals with irrigation	<b>30%</b> Excellent <b>43%</b> Good <b>19%</b> Moderate <b>8%</b> Poor Surface condition	<b>9</b> Ovals with 100+ Lux lighting
Change facilities	<b>81</b> No. Of change facilities	<b>56%</b> Change rooms size is <45m <sup>2</sup>	<b>28%</b> Rated either poor or very poor condition	<b>10%</b> Female friendly
Pavilion/ umpires rooms	<b>34</b> Pavilions	<b>94%</b> Have social area greater than 100m <sup>2</sup>	<b>95%</b> Have umpire facilities	<b>16%</b> Female friendly umpire rooms

GOAL	2032 TARGETS
Welcoming facilities	25% of player and umpire change rooms are female friendly and in line with the AFL Facility Guidelines.
Growing venue capacity	Increase playing field carrying capacity at existing AFL venues through the installation/upgrade of irrigation, drainage and playing surfaces.
Building partnership	Ongoing training, education and facility planning tools are provided to leagues and clubs to assist them to understand the process and requirements for securing funding for an infrastructure project.





## Appendix 2: The State of Play



## SANFL participation snapshot 2019

# 67,718 REGISTERED PLAYERS



## 20

AVERAGE AGE OF  
MALE PARTICIPANT

## 20-39 YEARS

LARGEST PARTICIPATION  
AGE COHORT



## 19

AVERAGE AGE OF  
FEMALE PARTICIPANT

## 542%

PARTICIPATION **GROWTH**  
**IN FEMALE** PARTICIPATION  
SINCE 2014

## 79%

PARTICIPATION  
GROWTH  
SINCE 2014



## 11,000+

AUSKICK PARTICIPANTS





# 50 Participation

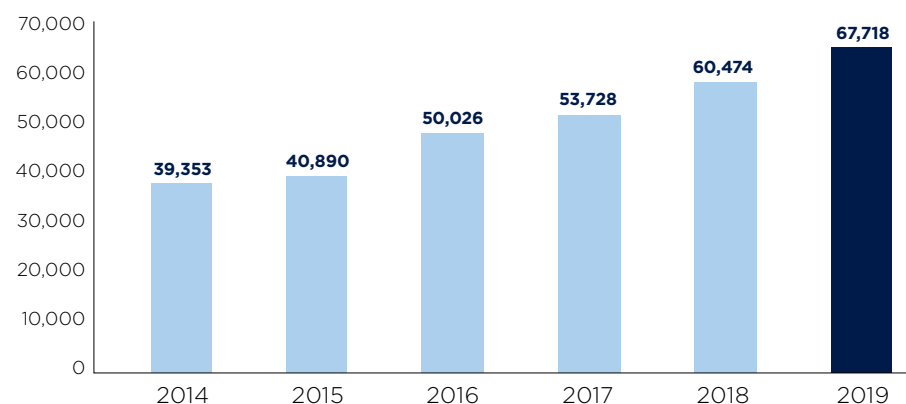
In season 2019 there were 67,718 registered football participants. This includes 56,131 registered club footballers and 11,587 Auskick participants. This is an overall increase of 72% since 2014. The 20-39 year age cohort is the largest and makes up 28% of all participation.

Of the 67,718 football participants 56% are based in the metropolitan regions. The remaining 43% are based in country regions.

Registered club football participants have increased by 80% since 2014 and Auskick participation has increased by 40% during the same time period.

The 2019 State average penetration (total population divided by the total number of players) is 3.8%. This is equivalent to 1 in every 26 people in SA participating in football.

## TOTAL PLAYER MEMBERSHIP 2014-2019



## PARTICIPATION BY AGE COHORT FOR SEASON 2019

Age Group	Gender	#	% of total participation
<4 years	Female	27	0.2%
	Male	141	
5-9 years	Female	2,837	27%
	Male	15,565	
10-14 years	Female	2,699	24%
	Male	13,469	
15-19 years	Female	2,045	18%
	Male	10,079	
20-39 years	Female	2,284	28%
	Male	16,577	
40+ years	Female	199	3%
	Male	1,794	
Not Provided	-	2	-

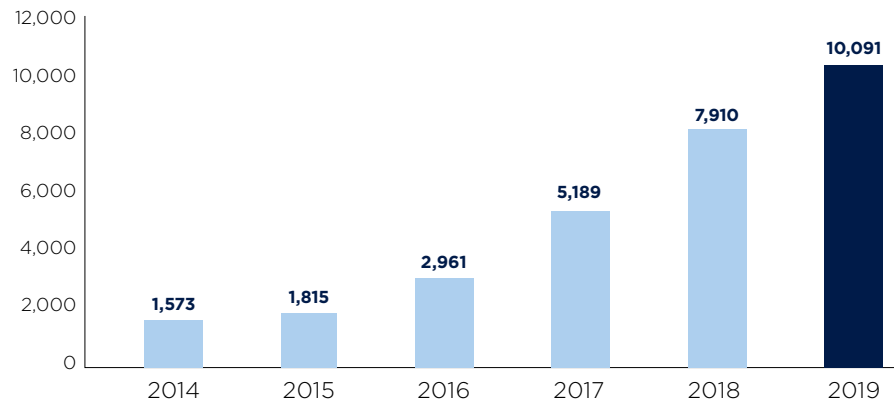
444 (1%) participants did not provide these details or reside outside SA. Please note that 2019 participation data has been utilised due to the disruption of the 2020 season due to COVID-19.

# Female participation

In season 2019 there were 10,091 registered female football participants across South Australia. This is a 540% increase since season 2014. These growth rates are following a similar pattern of national growth in female football.

The highest participation rate is in the 5-9 age cohort with 2,837 participants (28%), followed by the 10-14 age cohort (26%) and 20-39 (22%).

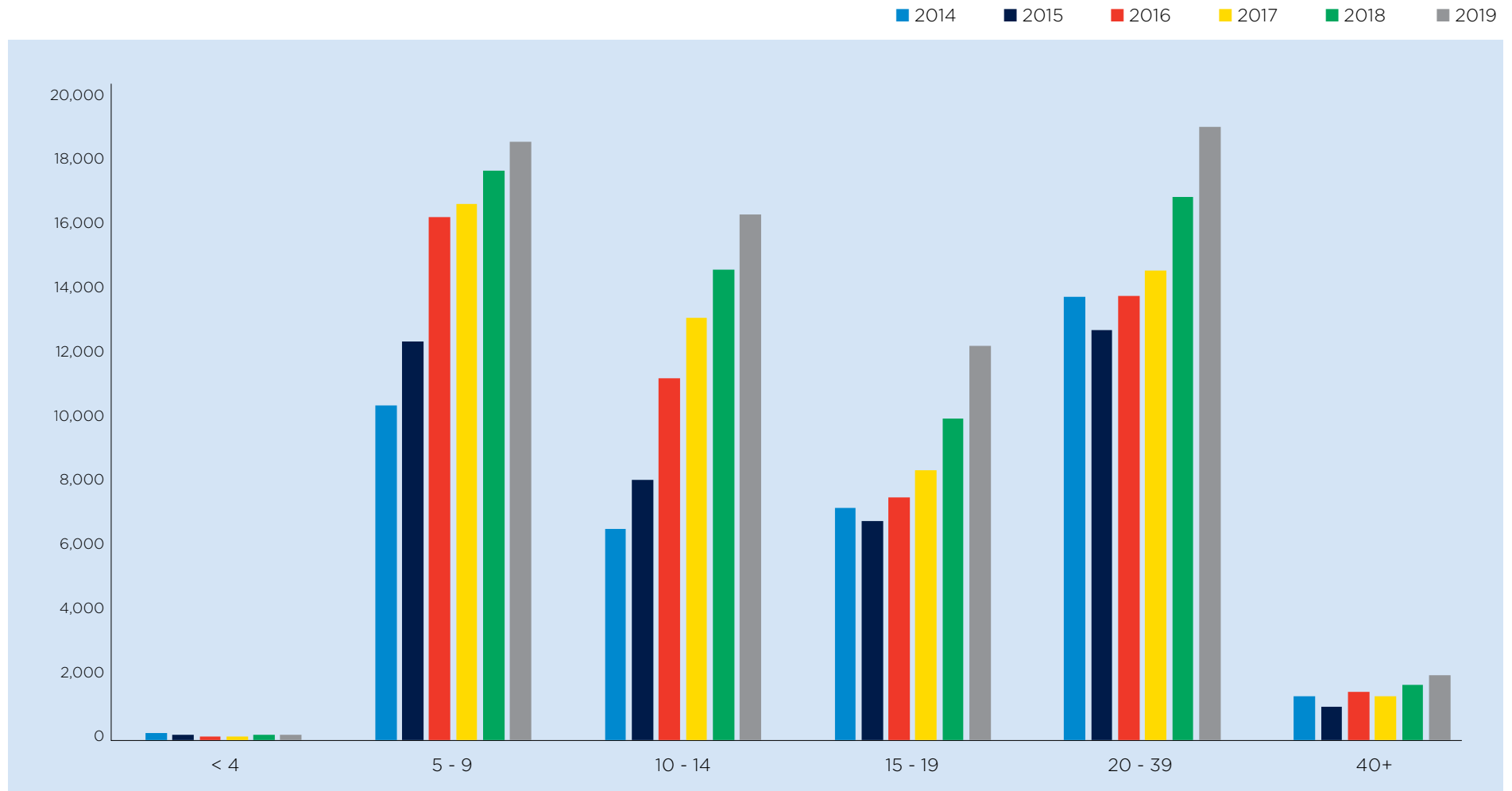
## TOTAL PLAYER MEMBERSHIP 2014-2019



## TOTAL FEMALE PARTICIPATION

REGION	2014	2019	Increase %
Adelaide Hills	64	742	1059%
Barossa	44	402	814%
Eastern	90	481	434%
Eyre and Western	31	209	574%
Far North	44	229	420%
Fleurieu	44	554	1159%
Limestone Coast	75	462	516%
Murray and Mallee	43	313	628%
Northern Adelaide	523	2,466	371%
Southern Adelaide	387	2,772	616%
Western Adelaide	177	866	389%
Yorke and Mid North	44	420	854%

## 52 Club participation by age cohort (2014 – 2019)



## Participation by SANFL planning regions

The table below provides participation figures based on where players live (LGA Res) in each of the SANFL Planning Regions across the last six years. All Regions have seen an increase in participation from 2014 to 2019.

SANFL Planning Regions	2014	2015	2016	2017	2018	2019	% Increase from 2014 to 2019
Adelaide Hills	3,202	3,222	3,669	4,041	4,434	5,326	66%
Barossa	1,515	1,895	2,110	2,324	2,728	2,823	86%
Eastern	1,535	1,668	2,446	2,612	3,204	3,239	111%
Eyre and Western	2,778	2,796	3,006	3,097	3,638	3,757	35%
Far North	2,341	2,015	2,382	2,544	2,840	2,942	25%
Fleurieu	1,877	1,826	1,961	2,185	2,410	2,733	45%
Limestone Coast	3,123	3,159	3,530	3,705	3,956	4,295	37%
Murray and Mallee	2,080	2,212	2,491	2,540	2,852	3,089	48%
Northern Adelaide	6,701	6,776	10,229	10,769	12,179	13,968	108%
Southern Adelaide	8,151	8,786	10,546	11,659	13,308	15,265	87%
Western Adelaide	2,270	3,001	3,518	3,878	4,400	5,166	127%
Yorke and Mid North	3,442	3,212	3,752	3,836	4,122	4,671	35%
Not Provided/reside outside SA	338	322	386	538	403	444	31%
<b>TOTAL</b>	<b>39,353</b>	<b>40,890</b>	<b>50,026</b>	<b>53,728</b>	<b>60,474</b>	<b>67,718</b>	<b>72%</b>



## 54 Participation by clubs

The table below provides the top 20 clubs for number of registered players in the 2019 season.

#	Football Club	Number of reg.	SANFL Planning Region
1	Blackwood Football Club	642	Southern Adelaide
2	Glenunga Football Club	603	Eastern Adelaide
3	Golden Grove JFC	571	Northern Adelaide
4	Reynella FC	551	Southern Adelaide
5	Tea Tree Gully JFC	514	Eastern Adelaide
6	Brighton Districts & Old Scholars FC	509	Southern Adelaide
7	Henley Football Club Juniors	473	Western Adelaide
8	Flagstaff Hill FC	471	Southern Adelaide
9	Unley Football Club	469	Southern Adelaide
10	Flinders Park FC	454	Western Adelaide
11	Port District FC	434	Northern Adelaide
12	Mitcham FC	434	Southern Adelaide
13	Walkerville Junior Football Club	430	Northern Adelaide
14	Port Noarlunga	412	Southern Adelaide
15	Modbury JFC	406	Northern Adelaide
16	Christies Beach	393	Southern Adelaide

17	Angle Vale Football Club	389	Northern Adelaide
18	Payneham NU JFC	381	Eastern Adelaide
19	Plympton Junior Football Club	380	Southern Adelaide
20	Goodwood Saints Football Club	365	Southern Adelaide



# Potential participation growth

There is no definitive formula or tool to predict when and if participation in a particular sport will increase or decrease. Forecasting future demand for any sport is challenging as it can be influenced by a number of contributing factors including demographic change (+/-), the type of programs and competitions offered, access to and condition of facilities, and in some cases the profile and success of a state or national team/ players.

The following table outlines the potential football participation growth based on population trends. This method is used to predict future club player numbers and does not take into account high levels of participation in other programs or activities (e.g. school programs). Participation in unstructured and/or informal or non-affiliated competitions and events are also not included. This method should be used as a guide only.

SANFL Region	Current participation	Potential 2026 participation	Potential 2031 participation	Projected additional players by 2031
Adelaide Hills	5,326	5,568	5,704	378
Barossa	2,823	3,184	3,321	498
Eastern Adelaide	3,239	3,357	3,462	223
Eyre and Western	3,757	3,599	3,542	-215
Far North	2,942	2,975	2,967	25
Fleurieu	2,733	3,030	3,183	450
Limestone Coast	4,295	3,567	2,628	-1,667
Murray and Mallee	3,089	2,861	2,754	-335
Northern Adelaide	13,968	14,979	15,429	1,461
Southern Adelaide	15,265	15,538	15,695	430
Western Adelaide	5,166	5,648	5,881	715
Yorke and Mid North	4,671	4,737	4,789	118
<b>TOTAL</b>	<b>67,274*</b>	<b>69,043</b>	<b>69,355</b>	<b>2,081</b>

\*444 participants did not provide where this live or reside outside SA.

This growth will therefore require access to an additional 12 ovals or new ovals will need to be developed.

## 56 Population projections

Australia's current population is estimated at 25,592,295, with SA making up approximately 7%. With a total land area of 983,482 square kilometres, it is the fourth-largest of Australia's states and territories by area, and fifth largest by population.

South Australia's estimated resident population is 1,778,795. This has increased at an annual growth rate of approximately 0.95%. The population growth is driven by natural increase (birth and deaths) and net migration (overseas and interstate).

Around 77.5% of the population live in the Greater Adelaide region. The City of Onkaparinga has the greatest population (172,938), followed by Salisbury (143,560), Port Adelaide Enfield (127,740) and Charles Sturt (118,943).

From June 2019 to June 2020, Mount Barker recorded the highest growth rate (2.9%) followed by Adelaide (2.6%). Mount Gambier has the largest population of the LGAs outside the Greater Adelaide region (27,275) and Yankalilla (1.7%) and Murray Bridge (1.5%) experienced the highest annual population growth rate in Regional SA.

This growth provides key opportunities to reinforce existing hot spots for Australian football, as well as opportunities to build a new footprint in areas that are yet to be established.

LGAs that will experience some of the largest growth over the 2021 – 2036 period are Playford (40,000) followed by Port Adelaide Enfield (28,506), Charles Sturt (23,316) and Onkaparinga (21,794). This could see a significant number of children aged between 5 and 14 in these areas that will potentially play Australian football. This has particular importance for SANFL and managing the sports and its facilities. New venue planning, club development and investment advocacy will require attention and resources in order to sustainably deliver Australian football over the coming decade and beyond in the identified growth areas.

### TOP 10 LGAS BY HIGHEST PROJECTED GROWTH 2016-2036

LGA	2016-2036 population change	% change 2016 to 2036
Playford	39,531	43.7
Port Adelaide Enfield	28,506	23.0
Charles Sturt	23,316	20.3
Onkaparinga	21,794	12.9
Marion	16,575	18.3
Salisbury	15,750	11.2
Gawler	13,894	59.5
Adelaide	13,565	57.6
Mount Barker	12,944	38.2
Tea Tree Gully	11,595	11.7

Source: Dept Planning, Transport and Infrastructure









## Appendix 3: Stakeholder Engagement Summary

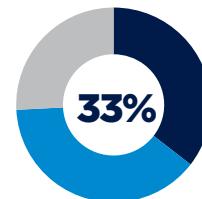
# Stakeholder engagement

The SANFL Infrastructure Plan consultation included a stakeholder workshop and an online survey that was distributed to LGAs and football Leagues across SA. A summary of consultation outcomes are outlined in the adjacent diagram.

These key facility findings have helped to shape and influence the overall strategic pillars and recommendations provided in the Plan.

Most important factors that assist LGAs in prioritising Australian football facility developments:

1. Strategic plan/capital works plan
2. Addressing safety issues
3. Availability of external funding opportunities



**of LGAs access school ovals for Australian football training or competition**

What do you see as the key barriers to Council investing in infrastructure for Australian football?

1. Lack of external funding
2. Lack of internal Council funds
3. Balancing the interests of competing sports

What are the key Australian football facility issues in your council area:

1. Player changerooms, particularly catering for women/girls
2. Umpires' rooms
3. Playing lights
4. Maintenance responsibilities of facilities

Football facility issues impacting league's ability to hold marquee events/carnivals/finals

1. Oval surface
2. Player changerooms, including catering for women and girls
3. Playing lights

Barriers faced when trying to access school facilities for football activities:

- Risk management/insurance
- Undersized or low quality oval surfaces
- No consistent approach from school to school (principal discretion)
- Access to toilets and changerooms

Barriers for League to invest in club infrastructure renewal/upgrades?

1. Lack of funds
2. Lack of understanding of facility upgrade needs
3. Investment not viewed as league's responsibility

Advice and support on funding opportunities and submissions, was the main assistance the Leagues would like to receive from LGAs.





Level 2 Riverbank Stand,  
Adelaide Oval, War Memorial Drive,  
North Adelaide, SA 5006

POSTAL ADDRESS

PO Box 606 Tynte Street,  
North Adelaide, SA 5006

Phone Number (08) 8424 2264

[sanfl.com.au](http://sanfl.com.au)

PHOTO ACKNOWLEDGEMENTS: Community photographers Paul Lack and Paul McDonough and our team of SANFL photographers.